



VIBRO HAMMER
SIDE GRIPPER
VIBRO HAMMER

HOME PAGE. www.sunjinco.com
E-MAIL. sales@sunjinco.com
PHONE. +82-10-4997-7970
FAX. +82-2-2637-0504

CONTACT.

⚙️ MACHINE FEATURES

- Outstanding workability and mobility.
- Easier operate when there is not enough vertical clearance above the foundation to permit use of a conventional pile hammer such as downtown area, bridge area and the vicinity of high-voltage electricity power lines than crane hammer does.
- Equipped with bigger vibration force powered by hydraulic motors and optimal bearings for high frequency vibration.
- Install vibro-isolating rubber for high frequency purpose.
- Easier connect and disconnect hydraulic hose lines to hammer from excavator.
- 360-degree swing for operator convenience.
- Comfortable driving and extraction of sheet pile, H-pile and tube pile with wire hanging method.
- The clamping lug can handle and move construction materials easily.
- Pile driving power improved by 20% compared to the existing equipments.
- Rigid clamping by Hardox inside.
- Lower cost of maintenance than crane hammer.

⚙️ MACHINE FEATURES

- G30 is Robotic Pile Drivers enabling you yo drive sheet piles, steel tubes, timber piles, h-i beams, cheaper, safer, quicker than traditional pile drivers.
- G30 is Robotic Pile Drivers With Side Grip and Bottom Clamp picks up the piles and turn to desired position adjusting the tilt and start driving the pile.

ADVANTAGES

- Drive Steel Sheet Piles , Steel Tubes , Timber Piles, H-I Beams.
- No Manpower Needed except excavator operator resulting less cost .
- Quick Change of Hands Suiting Your Pile Type and Size.
- Special Design resulting No Over Heating Problem.
- Carrier : 18-25 tons class excavators.

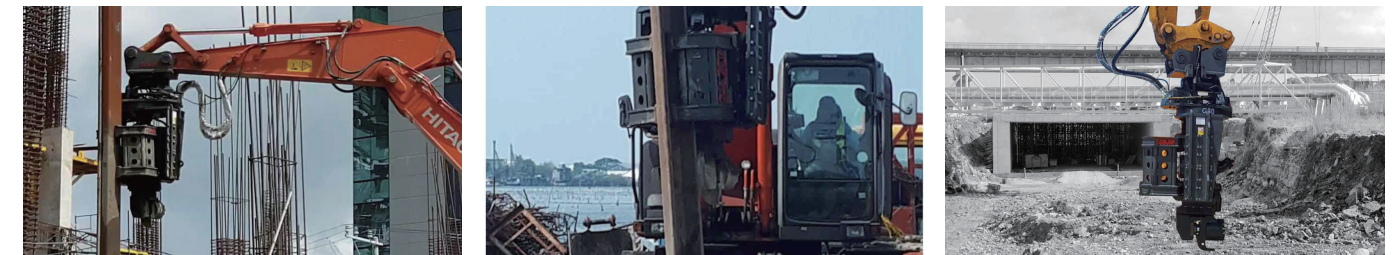
VIBRO HAMMER APPLICATINOS



SPECIFICATION

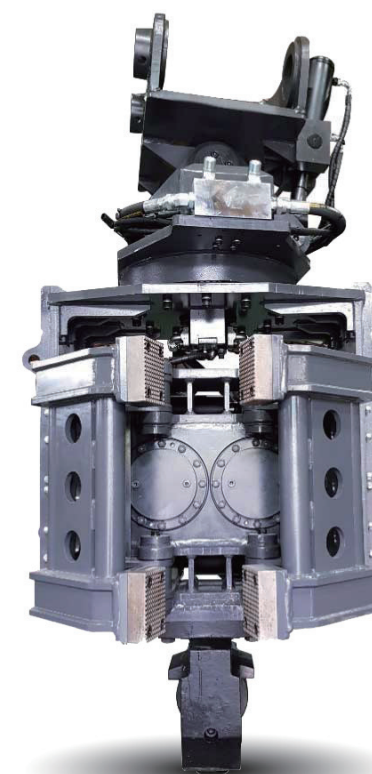
	VIBRATING HAMMER	S250	S350
WEIGHT OF CARRIER (MACHINE) APPLICABLE	TON	18.0 ~ 26.0	27.0 ~ 32.0
	LBS	39,683 ~ 57,320	59,525 ~ 70,548
WAY OF OPERATION	TYPE	VERTICAL	VERTICAL
OPERATING WEIGHT (OF VIBRATING HAMMER)	KGS	1,720	1,800
	LBS	3,792	3,968
OPERATING WEIGHT (OF EXTENSION BOOM)	KGS	600	700
	LBS	1,323	1,543
RELIEF / SETTING PRESSURE (OF MACHINE / CARRIER)	KG/CM2	180 ~ 200	200 ~ 250
	PSI	2,562 ~ 2,846	2,846 ~ 3,558
OPERATING PRESSURE (OF VIBRATING HAMMER)	KG/CM2	180 ~ 200	200 ~ 250
	PSI	2,562 ~ 2,846	2,846 ~ 3,558
OIL SUPPLY / OIL FLOW (FOR VIBRATING HAMMER)	LPM (L / MIN)	130 ~ 180	170 ~ 200
	GPM (G / MIN)	34.32 ~ 47.52	44.88 ~ 52.80
IMPACT / STRIKING FREQUENCY CENTRIFUGAL FORCE (= ECENTRIC FORCE)	BPM (BLOW PER MINUTE)	2,000 ~ 2,500	2,000 ~ 2,500
	KN	300	390
CLAMPING JAW	LENGTH - mm	564	564
	LENGTH - INCH	22.00	22.00
	WIDTH - mm	260	260
	WIDTH - INCH	10.00	10.00
	HIGHT - mm	695	695
	HIGHT - INCH	27.00	27.00
	LENGTH - mm	730	730
	LENGTH - INCH	28.70	28.70
	WIDTH - mm	1,140	1,140
	WIDTH - INCH	44.00	44.00
OVERALL OPERATING - SIZE (OF VIBRATING HAMMER)+(WITH MOUNTING CAP)	HIGHT - mm	2,030	2,030
	HIGHT - INCH	80.00	80.00

SIDE GRIPPER VIBRO HAMMER APPLICATINOS



SPECIFICATION

Weight (excluding adaptor)	1,980 Kg
Eccentric Moment	4 kgm
Centrifugal Force	395 kN
Frequency	2,700 rpm
Working Pressure	200Bar ~ 250Bar
Displacement	135 liter/min.
Dynamic Weight	1,150 Kg
Amplitude	7,7 mm
Rotation	360 Deg
Tilt	20 Deg.
Auto Drive System	Optional
Dimensions	140cm(L) × 140cm(W) × 160 cm(H)



Sheet Piles

From 300 mm to 600 mm Width
From 150 mm to 300 mm Depth
Max.Up to 1,250Kgs/ Each Pile

Steel Tubes

From 150 mm to 320 mm Diameter
Max.Up to 1,250Kgs/ Each Pipe

H-I Beams

From H160 to H260
Max.Up to 1,250Kgs/ Each Beam

Wood Piles

From 150 mm to 320 mm Diameter
Max.Up to 1,250Kgs/ Each Timber